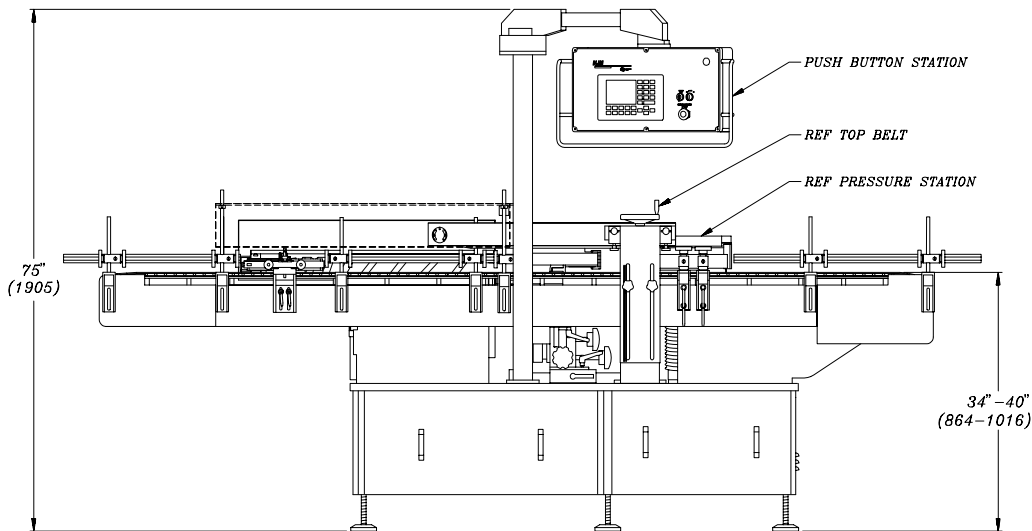
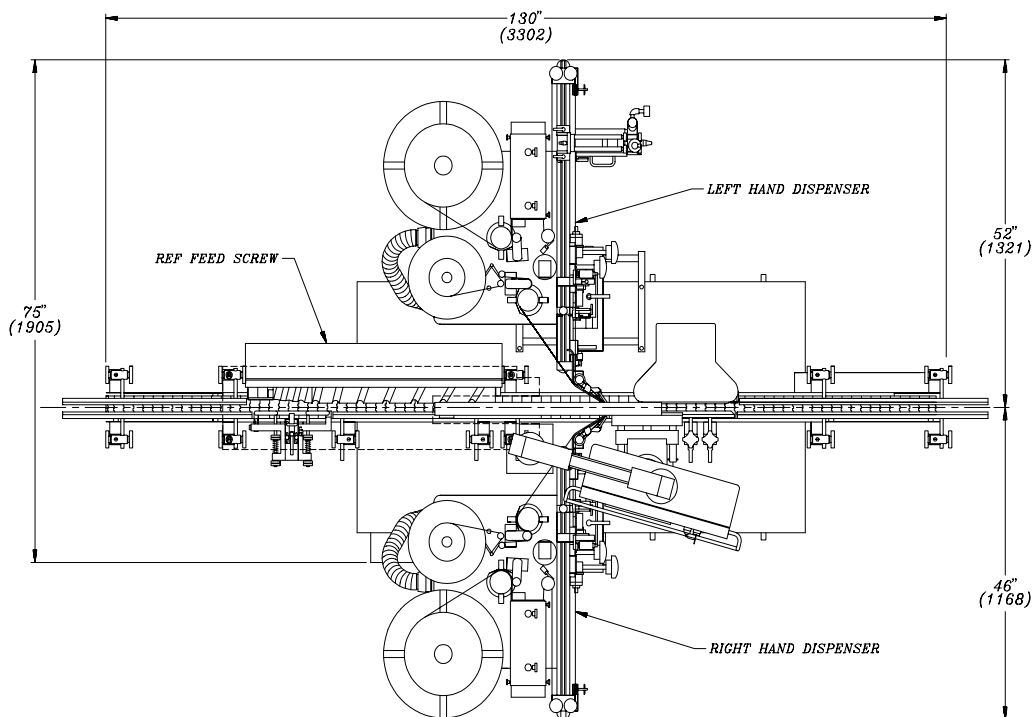


# MODEL 334 CHARGER

## Machine Specifications



*NOTE: DO NOT SCALE*  
 DIMENSIONS SHOWN ARE FOR BASIC MACHINE  
 AND MAY VARY DEPENDING ON OPTIONS  
 DIMENSIONS SHOWN ARE: INCHES (MILLIMETERS)



## MODEL 334 CHARGER

### Machine Specifications

- 1-LABEL RANGE**  
(with change parts)
- a) Minimum label size 5/8" (16mm) H x 7/8" (22mm) L [in direction of web travel]
  - b) Maximum label size 5" (127mm) H x 8" (203mm) L [in direction of web travel]
  - c) Roll size: 18" (457mm) O.D. with 3" (76mm) I.D. core
  - d) Maximum roll width: 5-1/4" (134mm)
  - e) Wind printed side out; side to side; left edge off first [for LH dispenser]  
right edge off first [for RH dispenser]
- 2-LABEL POSITION**
- a) Minimum distance from bottom of container to bottom of label: 1/8" (4mm)
  - b) Maximum distance from bottom of container to bottom of label: 4-1/8" (105mm)
- 3-CONTAINER RANGE**  
(with change parts)
- a) Container Height: 1" (25mm) to 14" (356mm)
  - b) Minimum Container 5/8" (16mm) Diameter or Width across conveyor  
(with 3-1/4" (83mm) conveyor)
  - c) Maximum Container 4-3/4" (121mm) Diameter or Width (along conveyor)  
(with 3-1/4" (83mm) conveyor)
  - d) Minimum Container 2" (51mm) Diameter or Width across conveyor  
(with 6" (152mm) conveyor)
  - e) Maximum Container 6-1/2" (165mm) Diameter or Width (along conveyor)  
(with 6" (152mm) conveyor)
- 4-SPEED RANGE**
- a) Variable dispensing speed up to 2400" (61 meters) per Minute
  - b) Variable conveyor speed up to 1440" (36 meters) per Minute
  - c) Up to 250 labels per minute, depending on label size
- 5-ELECTRICAL EQUIPMENT**
- a) Standard supply 230V, 60 cycle, single phase
  - b) Main Drive Motor 1725 RPM, 180V DC PM, 1-1/2 HP
  - c) SCR variable speed control
  - d) A.B. PLC model SLC 500 for machine control functions
  - e) Control circuit is 24V
  - f) Power requirements with single dispenser: 5KVA
  - g) Power requirements with dual dispensers: 6.5KVA
  - h) Control panel (swivel mounted) containing A.B. PANELVIEW Model 550 operator interface and emergency stop push-button
- 6-DISPENSER FEATURES**
- a) 5 Phase stepper drive
  - b) Label registration sensor
  - c) 18" (457mm) unwind arm and brake, power wind and vacuum free loop on high speed systems
  - d) 12" (305mm) rewind, dancer arm
  - e) Fixed product sensor
  - f) Label advance controlled by stepper motor
  - g) Solid state dispenser control



## MODEL 334 CHARGER

### Machine Specifications

#### 6-DISPENSER FEATURES (continued)

- h) Low label detector (warning)
- i) End of web detector (fail-safe)
- j) Feed roll open sensor (fail-safe)
- k) Label counter
- l) Six way mounting adjustment

#### 7-CONVEYOR DATA

- a) Tabletop conveyor chain 3-1/4" (83mm) WIDE, low friction Acetal #LF820-K3-1/4
- b) Sanitary style stainless steel conveyor bed rails with HMW wear strips
- c) Aluminum conveyor guide rails: UHMW inserts for container contact
- d) Conveyor height is adjustable from 34" (864mm) Min. to 40" (1016mm) Max.
- e) Infeed conveyor flush on both sides
- f) Discharge conveyor: Left hand primary; flush right hand side  
Right hand primary; flush left hand side

#### 8-CHANGE PARTS

- a) Peel plate (roll on)
- b) Peel plate, spring and brush assembly (flag on)
- c) 33" (838mm) SEPARATING feed screw
- d) 33" (838mm) SEPARATING feed screw and 18" (457mm) orienting feed screw (for dual feed screw system)
- e) Pressure pad
- f) Quick-change three panel brush assemblies
- g) Quick-change single panel pads

#### 9-OPTIONS

- a) 6" (152mm) wide conveyor chain
- b) Separating feed screw system
- c) Dual feed screw system (33" (838mm) separating feed screw and 18" (457mm) orienting feed screw)
- d) 90 degree TURNING system. Requires dual feed screw system (42" (1067mm) separating feed screw and 27" (685mm) orienting feed screw. Adds 9" (229mm) to infeed conveyor)
- e) Wheel type separator (single/dual)
- f) Dual synchronized orienting chains (requires wheel type separator (single/dual))
- g) Overhead stabilizing belt
- h) Rolling pressure station with 3" (76mm) wide belt plus pressure pad
- i) Rolling pressure station with 5-1/2" (139mm) wide belt plus pressure pad
- j) Oscillating pressure station (max. speed 180/min.)
- k) SCR driven rolling pressure station with 3" (76mm) wide belt used after oscillating pressure station. Adds 30" (762mm) to discharge conveyor
- l) Infeed loaded line and bottle backup control with line stop
- m) Machine casters
- n) Visual message beacons
- o) Product counter



## MODEL 334 CHARGER

### Machine Specifications

#### 9-OPTIONS (continued)

- p) Rate monitor
- q) Hot stamp imprinters: Norwood, Open Date and other manufacturers available
- r) Thermo transfer coders: Open Date 5775, SmartDate 2-I
- s) Capacitive label sensor for clear label stock
- t) Label on return web detector
- u) Missing code detector (MCD)
- v) Missing label detector (MLD) (6" (152mm) open conveyor at discharge needed, included in item "y")
- w) Bar code verification
- x) Machine vision system code and/or label verification
- y) Automatic ejection system for MCD or MLD (adds 18" (457mm) to overall length of machine) includes ejection verification
- z) Spare parts kit

#### 10-LUBRICATION

- a) Grease fittings and oil holes provide lubrication directly at point of use
- b) Lubrication points are ringed in red or marked

#### 11-GUARDING & FINISH

- a) Machine base enclosed with Stainless Steel covers
- b) Guards and Console enclosure: Stainless Steel
- c) Anodized or Electroless Nickel Plated accessories
- d) ALL SAFETY GUARDING INCLUDED

#### 12-SHIPPING

- a) Net Weight:   Single Sided 2,000 lbs.   Double Sided 2,500 lbs.
- b) Gross Weight: Single Sided 3,000 lbs.   Double Sided 3,500 lbs.
- c) Crate Dimensions:   12' (3.7m) Long x 6'5" (2m) Wide x 6'7" (2m) High Single Sided  
                                  12' (3.7m) Long x 7'6" (2.3m) Wide x 6'7" (2m) High Double Sided

#### NOTE:

- 1- Quality materials and line layouts directly affect efficiency. High quality products and labels, etc., as well as sufficient infeed and discharge capacity, must be supplied in order to obtain maximum production.
- 2- All furnish not specifically mentioned will be understood to be in accordance with New Jersey Machine Inc. current standards at the time of shipment. In view of our policy of continuing research, development and product improvement, actual specifications may vary slightly from those shown.

New Jersey Machine Inc. endeavors to provide its equipment with features which will allow the purchaser of such equipment to meet the requirements of the Occupational Safety and Health Act of 1970 ("OSHA"), as amended, applicable regulations thereunder, and any other applicable laws and regulations in the United States. If such equipment is found not to comply with any such law or regulation, New Jersey Machine Inc. will, at the request and the expense of such purchaser, attempt insofar as practical to modify such equipment so that it will so comply.



